



Reflow Soldering System



RF 300 Inline



STE.AL.TECH.
Your ideal partner in electronic

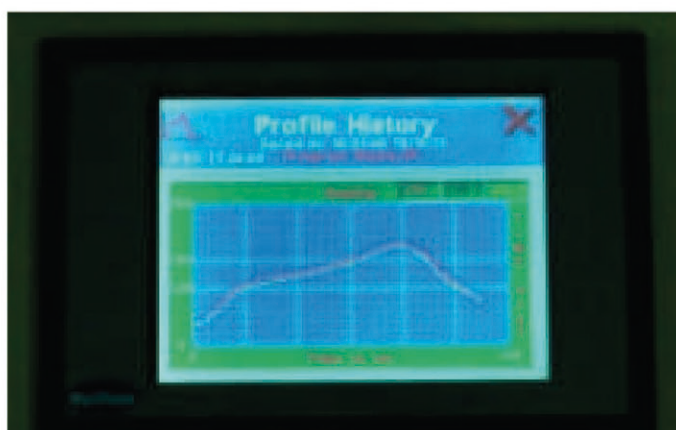
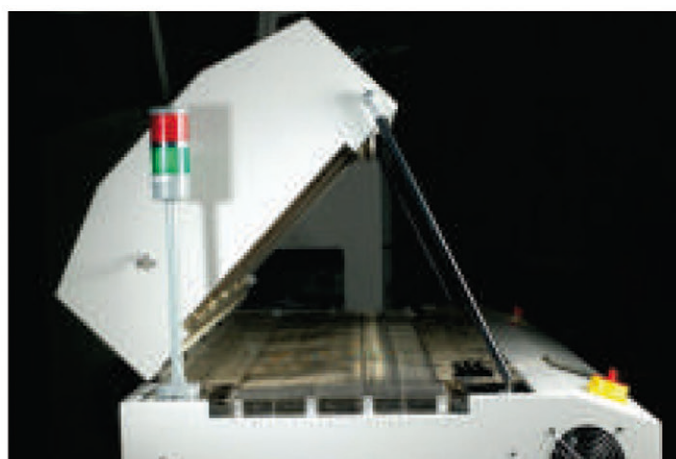


STE.AL.TECH. S.R.L. Via 2 Giugno 56, 23807 Merate (LC) - Tel. 039 9910404
E-mail: info@weldingtechnology.it - Url: <http://www.weldingtechnology.it>

System Features

- Each heating zone is independently programmable and easily controlled through the on-board TOUCH SCREEN controller
- Reflow profiling capability with on-board programming and ability to add three (3) thermocouples for specific board locations
- Maximum flexibility in defining a reflow profile with conveyor speed, heating temperature, convection heat flow, and cooling fans all easily programmed through the system controller
- Plenum convection heating technology provides uniform temperature profiling across entire PCB board for enhanced SMT process control
- System's maximum temperature of 320°C is compatible with most lead and lead-free solder paste profiles
- Clamshell hood design with mechanical strut
- Low mass stainless steel conveyor for board transport
- Store up to 100 individual profiles
- Password protection
- ISO 9000 SPC fault monitoring reporting
- Real time graphic temperature
- Status light tower
- PCB edge pin conveyor available to replace wire mesh conveyor (Optional)

Specifications	RF 300
Max. PCB Width	250 mm (10")
Max. PCB Height	35 mm (1.375")
Heating Zones	3 top, 3 bottom
Max Temperature	320°C (608°F)
Heated Tunnel Length	850 mm (34")
Convection	Plenum design
Conveyor	Mesh belt
Conveyor Extensions	--
Exhaust	Two (2) 102 mm (4") dia. 250 CFM (425 mm ³ /hr)
Cooling Station(s)	One (1)
Cooling Zone Fans	One (1)
Nitrogen Option	Optional
PC Interface	Included : RS232
Heater (Peak) Power	5.5 kw
Power Requirements	410 VAC, 50/60 Hz, 3 phase
Length	1400 mm (55")
Width	755 mm (30")
Height	450 mm (17.8")



STE.AL.TECH.
Your ideal partner in electronic



STE.AL.TECH. S.R.L. Via 2 Giugno 56, 23807 Merate (LC) - Tel. 039 9910404
E-mail: info@weldingtechnology.it - Url: <http://www.weldingtechnology.it>